



## Embodied Forces

The impact of computation in fashion

Language

Scale

## Language

A series of [automated] instructions carried out in a specific order.

Definition of *Scripting*, Source *Thesaurus.com*

## Data Associativity

In the associative model, everything which has “discrete independent existence” is modeled as an entity, and relationships between them are modeled as associations.



## Shape Changing materials

New York, 2016  
Parsons School of Design

Instructors:  
Efilena Baseta Noumena

Assistants:  
Grace Jun, Open Style Lab  
Jaskirat Randhawa, Open Style Lab



## Imprimida

Barcelona, 2016  
Sonar+D, IaaC, In(3d)ustry

Instructors:  
Aldo Sollazzo Noumena  
Pietro Leoni, Carlo Ratti  
Ece Tankal, Hyphen Labs  
Chirag Rangholia, Noumena

Assistants:  
Efilena Baseta, Noumena  
Eugenio Bettucchi, Noumena

## Photoreactive Wearable

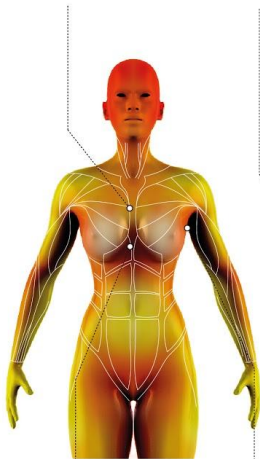
The advancement in the nanotechnology has led to big inventions in the fields of biology, medicine, and material science. Driven by technology, this multidisciplinary research focuses on the implementation of a photomechanical material into a reactive wearable that aims to protect the body from the ultraviolet radiation deriving from the sun. In this framework, the wearable becomes an active, supplemental skin that not only protects the human body but also augments its functions, such as movement and respiration. The embedded knowledge enables the smart material to sense and exchange data with the environment in order to passively actuate a system that regulates the relation between the body and its surroundings in an attempt to maintain equilibrium.



# Photoreactive Wearable

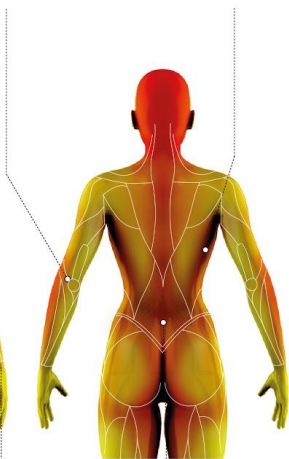
MOVEMENT DATA / MUSCULAR ANATOMY

BREAST/WAIST  
STIFF AREA



MEDIAL MID  
ANTERIOR TORSO  
STIFF AREA

ELBOW  
STRETCHING AREA



ARMPIT  
STRETCHING AREA

SIDE BACK  
STRETCHING AREA

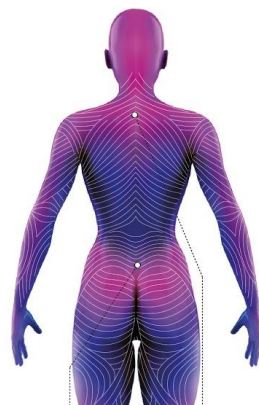


POSTERIOR LOWER  
TORSO  
STIFF AREA

FLEXIBILITY DATA / KRAISSL'S LINES



MEDIAL UPPER  
CHEST



ANTERIOR LOWER  
ARM

POSTERIOR LOWER  
TORSO

POSTERIOR LOWER  
BACK

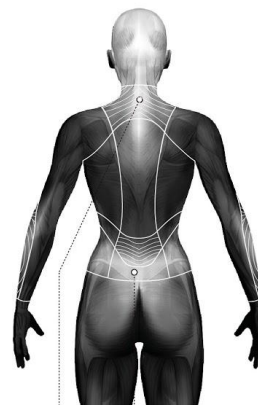
DESIGN



MEDIAL UPPER  
CHEST

ANTERIOR LOWER  
ARM

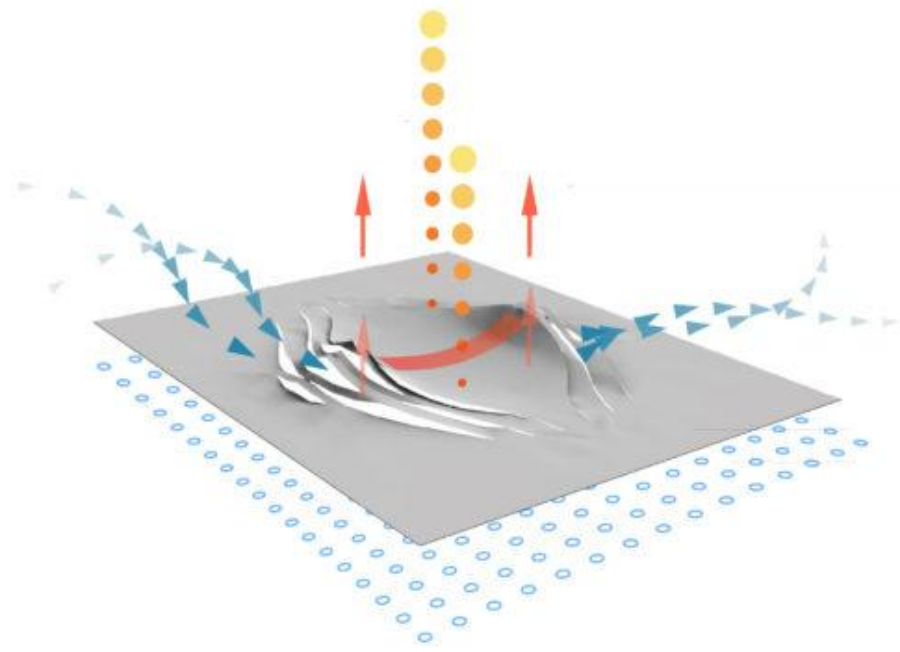
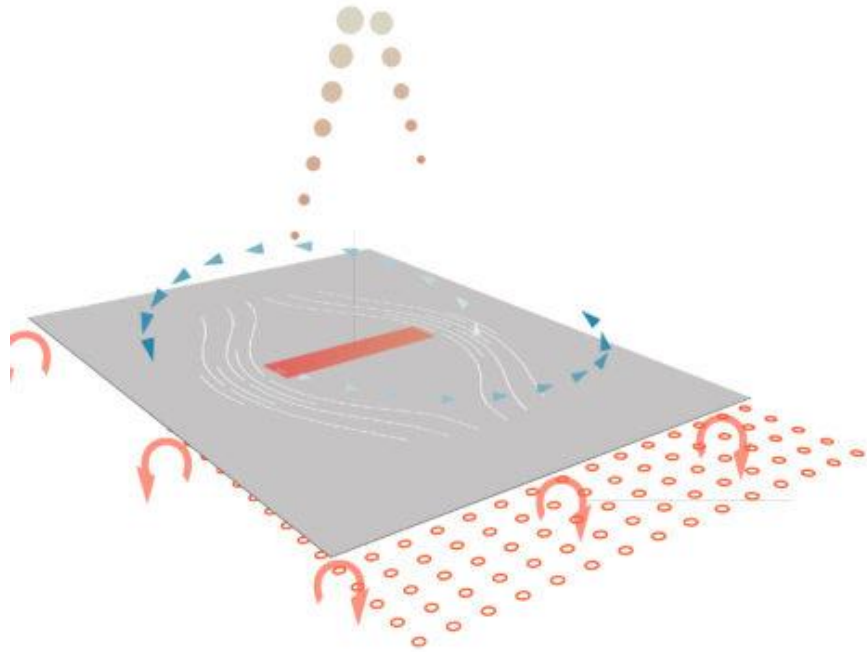
LOWER  
NECK



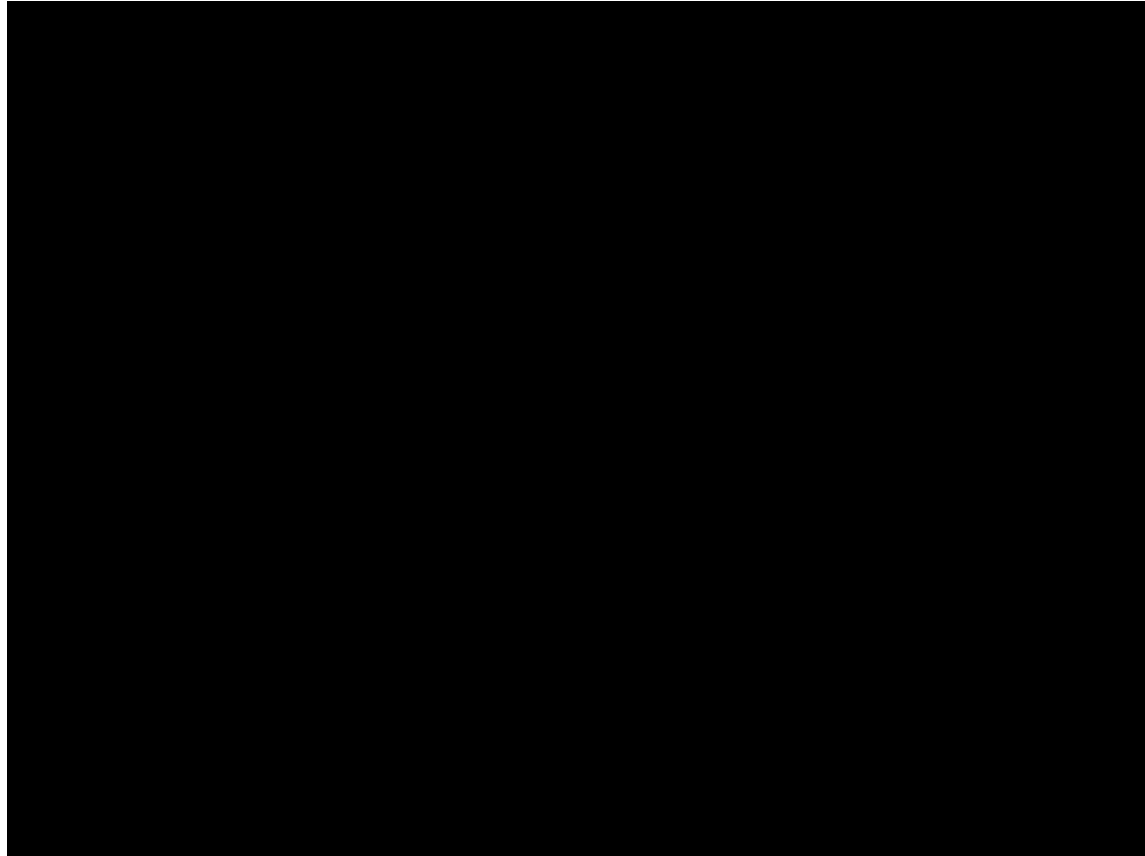
POSTERIOR LOWER  
TORSO



# Photoreactive Wearable



## Photoreactive Wearable



## Worth Project

WAAG SOCIETY (NETHERLANDS)  
NOUMENA (SPAIN)  
PRIMLAB (SPAIN)

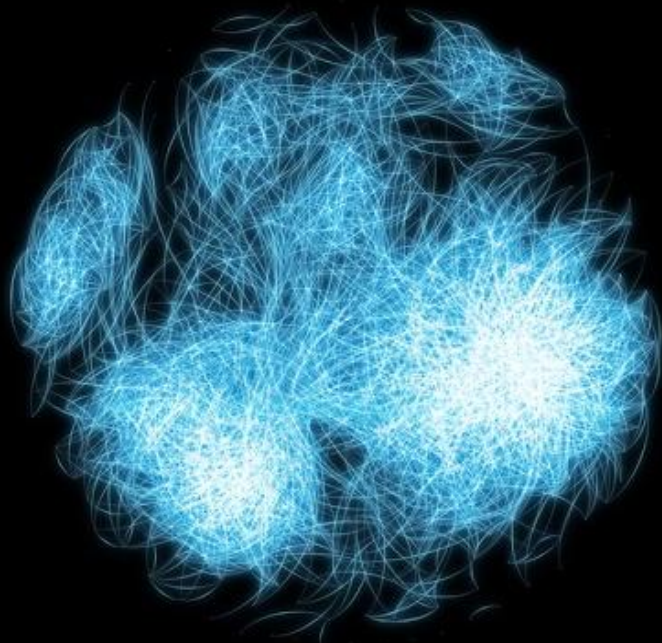


## Impact

A set of numbers, amounts, used to measure or compare the level of something.

Definition of *Scale* ,Source Cambridge Dictionary

# Reshape



Reshape is an online platform promoting research, design and production of digital ideas, exploring implications and applications of technology and innovation in our society.

By representing an international community of designers, makers and customers inspired by innovation, Reshape intends to establish a new worldwide network of ideas and creativity able to shift the production paradigm of our society.

# ALEPH



Arturo Tedeschi  
Elnaz Ghazi  
Lorenzo Massimiano

Embodied Forces

Fabricademy bootcamp 2018



ALEPH

Pinar Guvenc  
Gonzalo Carabajo  
Inanc Eray  
Marco Mattia Cristofori

Embodied Forces

Fabricademy bootcamp 2018

## Graduated Spine Support System – GS3

Snezhana Paderina  
Nikita Replyanski  
Maria Replyanski  
Christopher Diaz







RESHAPE 18

Sensing materialities

IV edition

Embodied Forces

Fabricademy bootcamp 2018

# Reshape 18



Brady Dunn Klerks

Sr Innovation expert for the arts and technology.



Lala Mogas-Soldevila

Based at the Living Materials SilkLab at Tufts Biomedical Engineering.



Valerie Bergeron

Director of Materfad - material center of Barcelona



Anastasia Pistofidou

Director of the FabTextile and Founder of Fabricademy.



Claudia Pasquero

Director of ecoLogicStudio an architectural and urban design studio.



Augusto Guardiola

Marcelo Vilá Strategy Committee member



Alessandro Manetti

Director del IED Barcelona.



Gaia Danese

Consul of Italy in Barcelona



## Embodied Forces

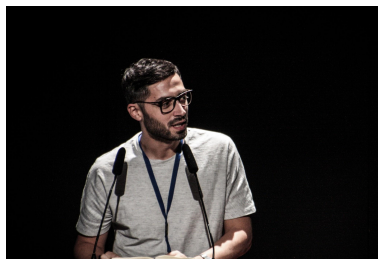
This edition of RESHAPE is split into two categories: wearables and consumer goods. We seek for a wide variety of applications, spanning from fashion tech and prosthetics solutions negotiating with our own bodies, to intelligent products assisting us in our daily activities. RESHAPE 18 challenges makers and designers to present their innovative proposals sharing their solutions among the distributed frame of research and application. State-of-the-art fabrication techniques are required to facilitate the creation of tailored products that tackle daily problematics, such as respiration, contamination, harmful body postures, disabilities, and stress with the intention to improve the quality of our lives.

# Reshape Forum @ In(3d)ustry

15th / 17th of october 2018



SYMPOSIUM



1:1 CORNER



AWARDS



EXHIBITION



<http://noumena.io/>  
[info@noumena.io](mailto:info@noumena.io)