

## Embodied Forces

The impact of computation in fashion

Language

Scale

## Language

A series of [automated] instructions carried out in a specific order.

Definition of *Scripting* ,Source *Thesaurus.com*

## Data Associativity

In the associative model, everything which has “discrete independent existence” is modeled as an entity, and relationships between them are modeled as associations.



## Shape Changing materials

New York, 2016  
Parsons School of Design

Instructors:  
Efilena Baseta Noumena

Assistants:  
Grace Jun, Open Style Lab  
Jaskirat Randhawa, Open Style Lab



Embodied Forces

## Imprimida

Barcelona, 2016  
Sonar+D, IaaC, In(3d)ustry

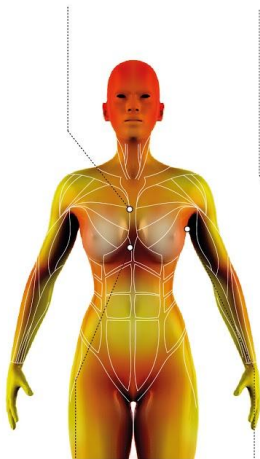
Instructors:  
Aldo Sollazzo Noumena  
Pietro Leoni, Carlo Ratti  
Ece Tankal, Hyphen Labs  
Chirag Rangholia, Noumena

Assistants:  
Efilena Baseta, Noumena  
Eugenio Bettucchi, Noumena

# Unsize

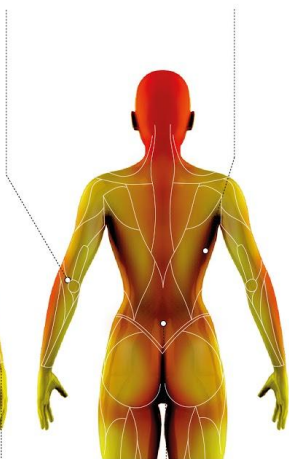
MOVEMENT DATA / MUSCULAR ANATOMY

BREAST/WAIST  
STIFF AREA



MEDIAL MID  
ANTERIOR TORSO  
STIFF AREA

ELBOW  
STRETCHING AREA



ARMPIT  
STRETCHING AREA

SIDE BACK  
STRETCHING AREA



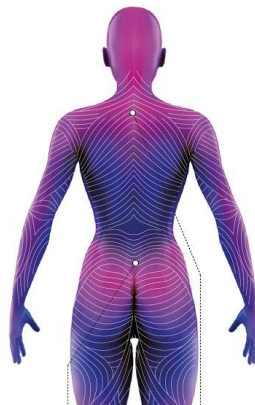
POSTERIOR LOWER  
TORSO  
STIFF AREA

FLEXIBILITY DATA / KRAISSL'S LINES



MEDIAL UPPER  
CHEST

ANTERIOR LOWER  
ARM



POSTERIOR LOWER  
TORSO

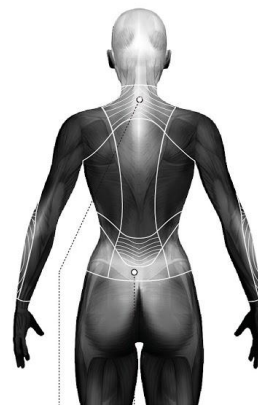
POSTERIOR LOWER  
BACK

DESIGN



MEDIAL UPPER  
CHEST

ANTERIOR LOWER  
ARM



LOWER  
NECK

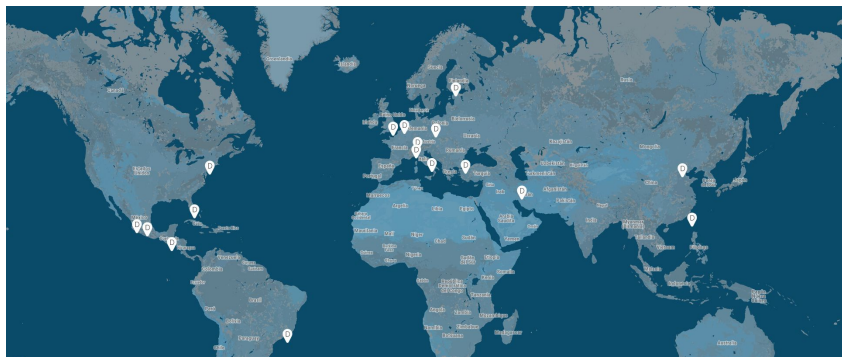
POSTERIOR LOWER  
TORSO

## Impact

A set of numbers, amounts, used to measure or compare the level of something.

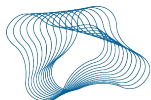
Definition of *Scale* ,Source Cambridge Dictionary





# Reshape

Reshape is an online platform promoting research, design and production of digital ideas, exploring implications and applications of technology and innovation in our society. By representing an international community of designers, makers and customers inspired by innovation, Reshape intends to establish a new worldwide network of ideas and creativity able to shift the production paradigm of our society.



**IN(3D)USTRY**  
FROM NEEDS TO SOLUTIONS  
Additive & Advanced  
Manufacturing Global Hub

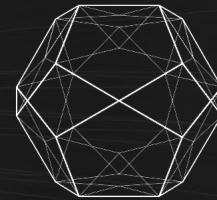


[youreshape.io](http://youreshape.io)



# RESHAPE 17

Programmable Skins competition



III edition

Embodied Forces

Maker Faire Barcelona 2017

## Reshape 17



**ANASTASIA PISTOFIDOU**  
Fab textiles, Fab Lab Barcelona, IaaC, Fab Lab Santiago, Universidad Adolfo Ibáñez.



**ADRIAN WELCH**  
e-architect, Founder & Co-Editor Pace, Kuwait, Senior Architect



**ARETI MARKOPOULOU**  
IAAC, Digital Matter, StudioP52.



**CECILIA RASPANTI**  
TextileLab Amsterdam, FabLab Amsterdam – Waag Society.



**GRACE JUN**  
Open Style Lab, Parsons School of Design.



**MIQUEL SERRANO**  
IN(3D)USTRY From Needs to Solutions, Additive & Advanced Manufacturing Global Hub.



**PAUL SOHI**  
Fusion360, Autodesk.



**PETER HANAPPE**  
Sony Computer Science Laboratory, P2P Food Labs, LettuceThink, CitizenSeeds, NoiseTube.



**SIMONE CESANO**  
ADIDAS, Senior Director Design Operations

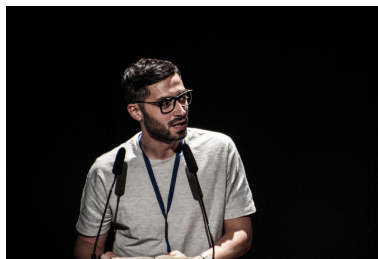
Wearables are becoming an active, supplemental skin that not only protect our body but also facilitate functions such as growth, movement, respiration and nutrition or rehabilitate the environment. Becoming a new medium able to regulate the relation between our body and its surroundings, wearables can now collect and exchange information producing dynamic outputs. RESHAPE 17 goes beyond ubiquitous computing, towards integrated and holistic strategies with the objective to move beyond electronics, in favor of programmable materials.

# Reshape Forum @ In(3d)ustry

3rd / 5th october 2017



SYMPOSIUM



1:1 CORNER



AWARDS



EXHIBITION



<http://noumena.io/>  
[info@noumena.io](mailto:info@noumena.io)